

NEW MOLD & DESIGN

RUGGED HEADPHONE

This ultra durable full-size headphone that is **BUILT TO LAST**. After meticulous research and refinement, the internal & external design have been tooled to offer a robust and rugged headset with a universal-fit. Premium features like reinforced welds, multi-layered construction, and lock-down cable assembly make this an indestructible piece far exceeding its price point.



KEY FEATURES

CONTACT FOR PRICE



TWIST-ABLE HEADBAND

Strong flexible headband.
Highly resistant to breaks.



ROTARY VOLUME CONTROL

Control volume with smooth rotary
dial. Lots of volume on tap!



HEAT WELDED PLUG/JOINTS

3.5mm plug works with phones,
tablets, computers, & more.



6FT DURABLE BRAIDED CORD

Ultra durable 6ft cord. Knotted at
all joints. No frayed wires!



NOISE ISOLATION PADS

Redesigned soft-touch pads
are glued and locked into place.



UNIVERSAL-FIT (FITS ALL SIZES)

Full-size headphone with fully
adjustable headband and hinges.



STEREO/MONO SWITCH

Change between Stereo or
Mono with the flip of a switch.

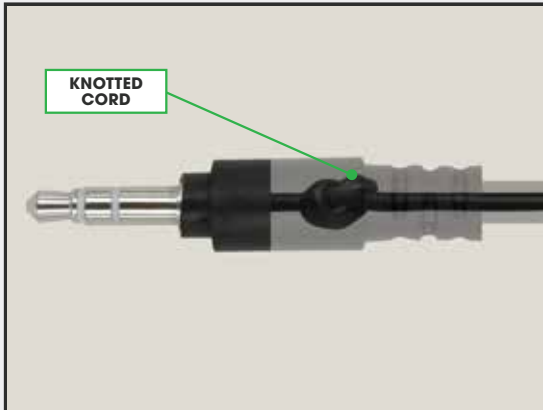


WIPE CLEAN (HYGIENIC)

No open holes or cracks.
Easy to keep sanitary.

RUGGED CORD DESIGN (6FT)

CONTACT FOR PRICE



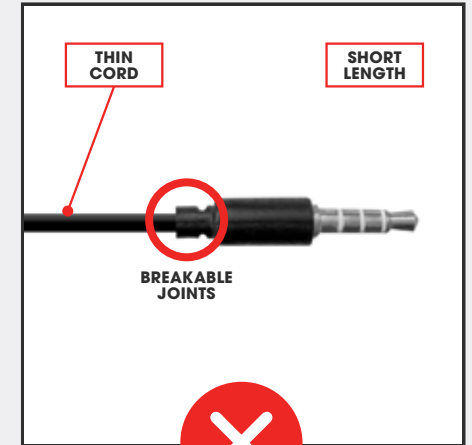
KNOTTED CORD

Cord is knotted at contact points. Prevents any loose wires and offers ultimate stability.



LOCK-DOWN CABLE ASSEMBLY

Re-engineered to give an additional layer of protection to internal circuitry.



OTHERS



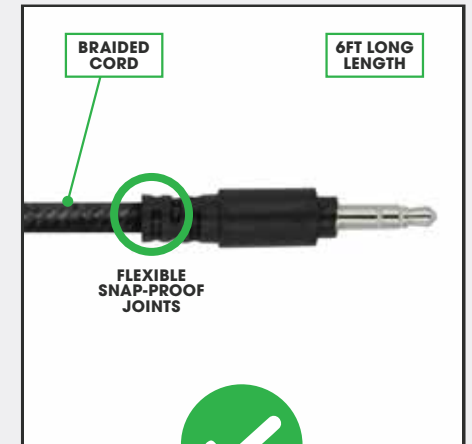
6FT BRAIDED "CHEW PROOF" CORD

Ultra durable braided cord is built to last. The thick tangle-free cord maintains flexibility.



GLUE IN ALL CONTACT POINTS

Reinforced glue welds at all contact points. Provides ultimate protection for everyday use.



OURS

REINFORCED CONSTRUCTION

CONTACT FOR PRICE



4-POINT LAYERED CONSTRUCTION

Glued tight and locked into place with a 4-point layered connection.



LOCKABLE GLUED/REINFORCED

Welded joint points & knotted attachment ensure the cord can not pull out!



HEAT WELDED JOINTS/EXTRA SOLDER

Every joint, crevice, and connection is over-soldered/glued for outstanding durability.



NO OPEN HOLES OR CRACKS

Closed construction is more hygienic. Easy to clean and no access to internals.



OTHERS



OURS

REINFORCED LAYERED CONSTRUCTION

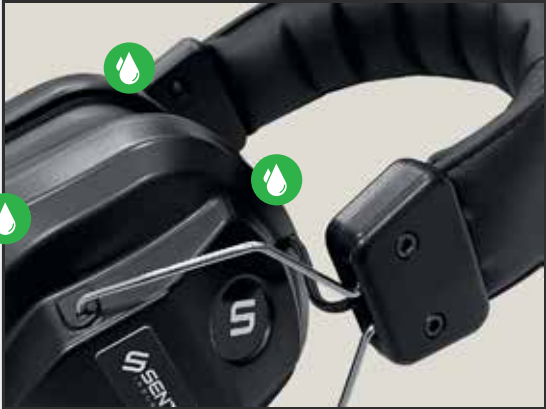
INDESTRUCTIBLE EARPADS

CONTACT FOR PRICE



DOUBLE LAYERED ATTACHMENT

New double layered attachment system firmly secures earpads to headset.



GLUED & INDESTRUCTIBLE

Glued and locked into place. The pads and hinges are virtually indestructible.



OTHERS



INDUSTRIAL-GRADE EARPADS

Redesigned earpads are optimized for comfort, durability, and noise isolation.



EASY WIPE DOWN. HYGIENIC/SANITARY

Completely closed design offers a sanitary experience against everyday abuse.



OURS

ADDITIONAL FEATURES

CONTACT FOR PRICE



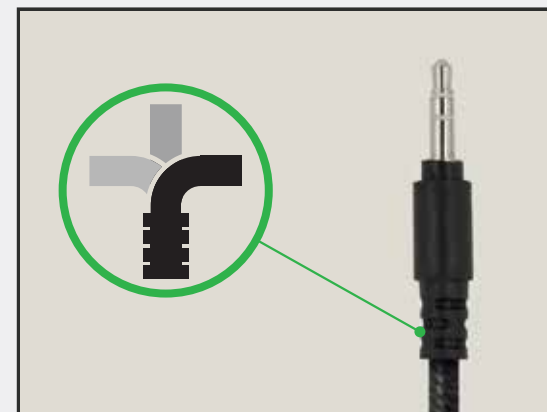
FITS ALL SIZES (UNIVERSAL-FIT)

Fully adjustable headband with contouring metal hinges adapts to all head sizes.



DROP RESISTANT

The rugged construction and materials are strong enough to withstand everyday abuse.



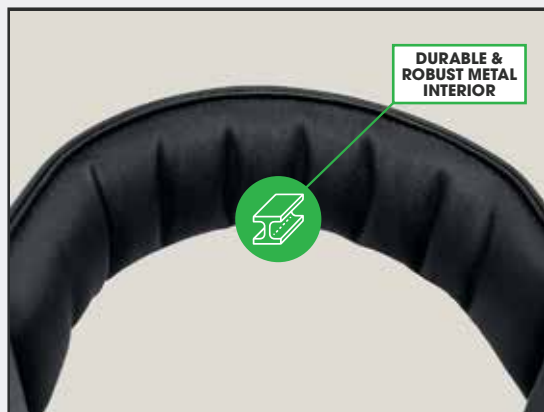
FLEXIBLE ANTI-SNAP JOINTS

Flexible and fortified cord joints are resilient against abrupt movements and misuse. 6ft cord.



NOISE ISOLATION EARPADS

Redesigned earpads are optimized for comfort, durability, and noise isolation.



REINFORCED METAL INTERIOR

Tough but flexible metal interior wrapped in a plush padded headband.

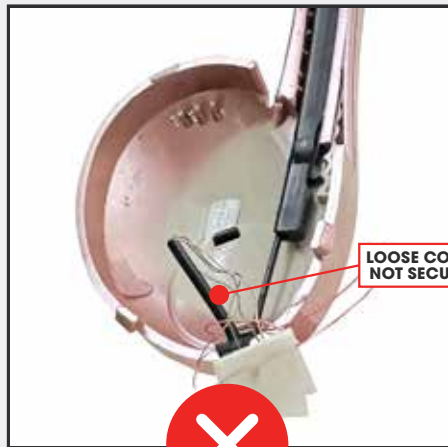


SPLASH-PROOF EXTERIOR

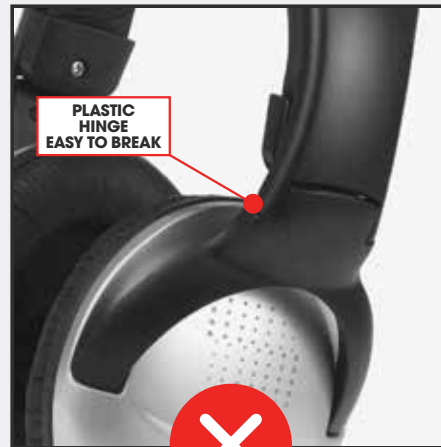
Completely closed design with no access to internal circuitry and no place for mold to grow.

ADDITIONAL IMPROVEMENTS

CONTACT FOR PRICE



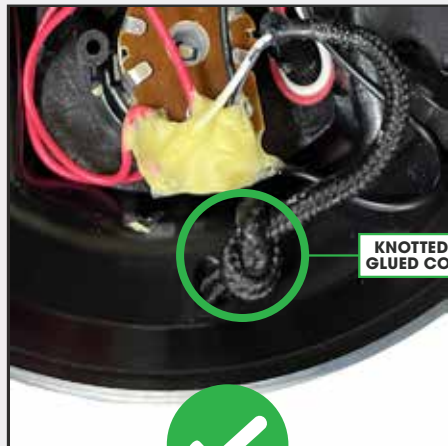
OTHERS



OTHERS



OTHERS



OURS



OURS



OURS

ADDITIONAL IMPROVEMENTS

HIGHLIGHTS

CONTACT FOR PRICE



TWIST-ABLE
PADDED
HEADBAND

REINFORCED
METAL
HEADBAND



NOISE
ISOLATION
PADS

RUGGED
CLOSED
DESIGN



DYNAMIC
STEREO
SOUND

ROTARY
VOLUME
CONTROL



TOUGH
3.5MM
CORD

STEREO/
MONO
SWITCH



6FT (1.8M)

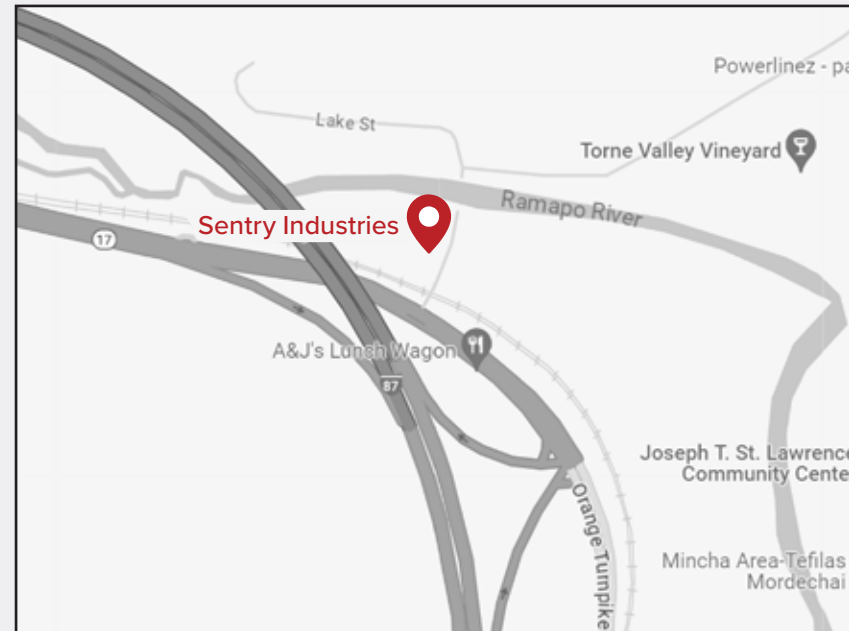




GET IN TOUCH

CONTACT US TODAY

Contact Sentry Industries and get in touch with your own personal agent. We are here in our NY office ready to answer any and all questions. Custom quotes are available. Whether you are a first time buyer or a return customer, we are here to help.



 1 Bridge St Hillburn, NY 10931

 **845.753.2910**

 **sales@sentryind.com**

 **sentryindustries.com**